


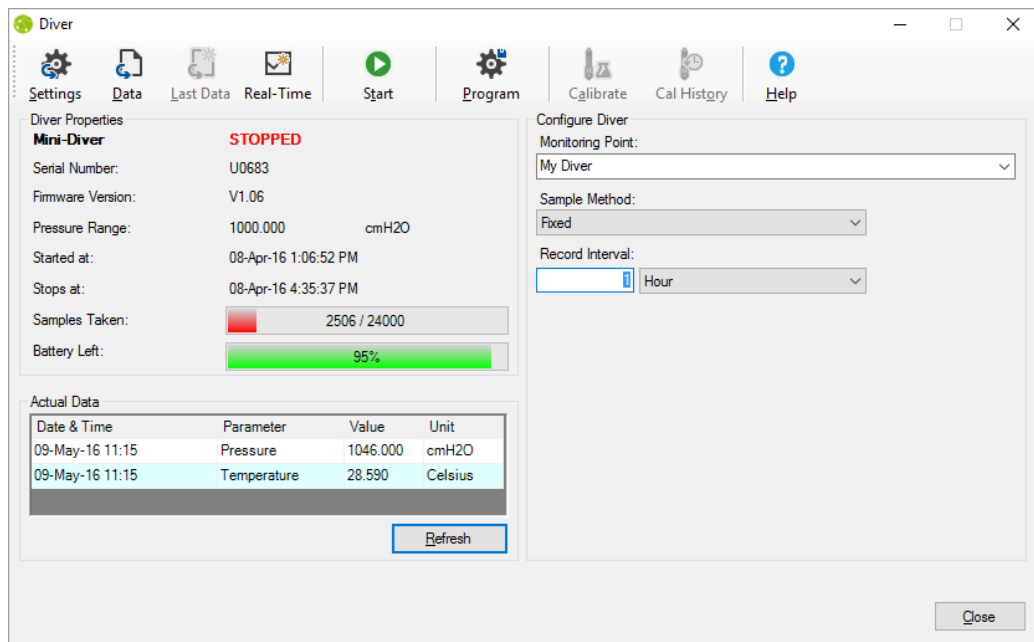


Quick Reference Guide


Working with Divers

Read Diver Settings

1. Place a Diver into the USB Reading Unit or connect to the PC interface cable. Ensure that your reading device is connected to your computer.
Note: USB Reading Unit or PC interface cable must be connected prior to launching Diver-Office.
2. From the Diver-Office toolbar, select the  **Diver** button. The **Diver** dialog will open displaying the settings and status of the Diver.



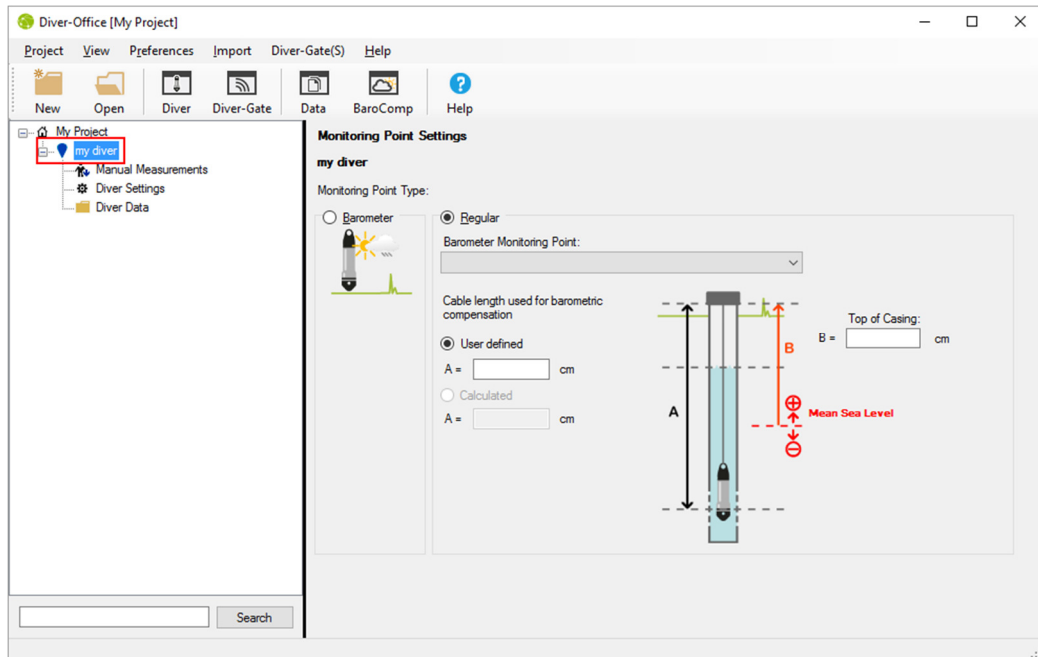
Program Diver Settings

3. Enter the following information in the Diver dialog (shown above):
 - Monitoring Point** **Monitoring Point** name *must be* unique
 - Sampling Method** Choose between **Fixed**, **Averaging**, **Event Based**, **Setup A**, **B** or **C**, or **User Defined**
 - Record Interval** Enter a record interval (0.5 sec – 99 hr) * Fixed, Averaging or Event Based method only
4. Once the settings have been entered, click the  **Program** button from the Diver toolbar.



Defining Monitoring Point Settings

- Select the Monitoring Point name from the Project Tree. The Monitoring Point settings will load in the adjacent frame.



- Diver type, either **Regular** or **Barometer**, is automatically assigned but you can manually change this.
- If the Diver type is **Regular**, enter the following settings:

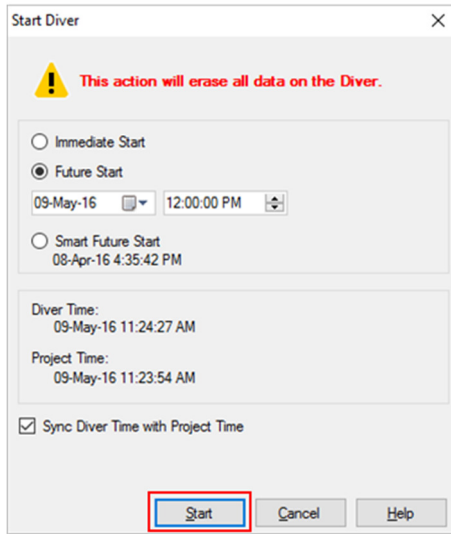
Barometer Monitoring Point	Select the corresponding barometer location from the dropdown menu.
Note: This barometer location must already exist in your project	
Cable Length (<i>optional</i>)	Enter the cable length measurement at the monitoring point
Top of Casing (<i>optional</i>)	Enter the top of casing measurement with respect to your vertical reference datum.

Starting a Diver

- Click the **Start** Diver button from the Diver toolbar.
- From the Start Diver dialog (shown below), select the appropriate start method, *i.e.*, **Immediate Start**, **Future Start** or **Smart Future Start**. These options are described in more




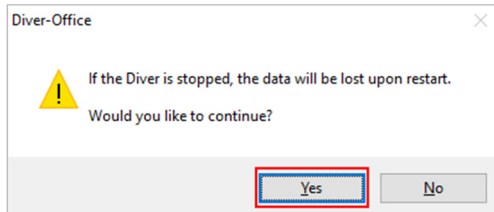
detail in the Diver-Office online help.





10. Click the **Start** button to complete the process.

Stopping a Diver

11. Click the  **Stop** button from the Diver toolbar.
12. Click the **Yes** button in the warning message that appears.




Note Only the applicable option will show in the Diver dialog:

 Stop Diver or  Start Diver



Downloading Diver Data

- Click the  **Data** button from the Diver toolbar. The download progress is shown in the bottom left corner of the Diver dialog.

The screenshot shows the 'Diver' application window. The 'Data' button is highlighted in the toolbar. The 'Diver Properties' section shows 'Mini-Diver' is 'STARTED' with a serial number of U0683 and a battery level of 95%. The 'Actual Data' table is visible below. At the bottom of the window, a red-bordered box highlights a progress bar and the text 'Downloading data, please wait...'.

Date & Time	Parameter	Value	Unit
09-May-16 11:32	Pressure	1045.600	cmH2O
09-May-16 11:32	Temperature	28.760	Celsius

Viewing Downloaded Diver Data

- Once downloaded, your Diver dataset will be listed in the project tree and shown.

The screenshot shows the 'Diver-Office [My Project]' window. The project tree on the left shows 'my diver' containing 'Manual Measurements', 'Diver Settings', and 'Diver Data'. The main area displays a graph titled 'MY DIVER - E9999 - [22-Feb-14 8:50:09 PM - 11-Jan-16 11:50:09 PM]'. The graph plots Pressure (cmH2O) in blue and Temperature (Celsius) in green over time. Below the graph is a table of data points.

Date & Time	Pressure (cmH2O)	Temperature (Celsius)
Saturday, February 22, 2014 8:50:09.0 PM	1023.14	20.427
Saturday, February 22, 2014 9:50:09.0 PM	1024.22	20.440